

ITEC 3200 Database Project Final Report Components (100 points)

One team member from each group will upload a word document with the following components. Please do not have multiple people from each team upload separate documents. The report needs to be uploaded no later than end of day Tuesday Nov 15 by one team member. Please note that the dropbox will close after this date. No late submissions can be accepted due to the deadline to post final grades.

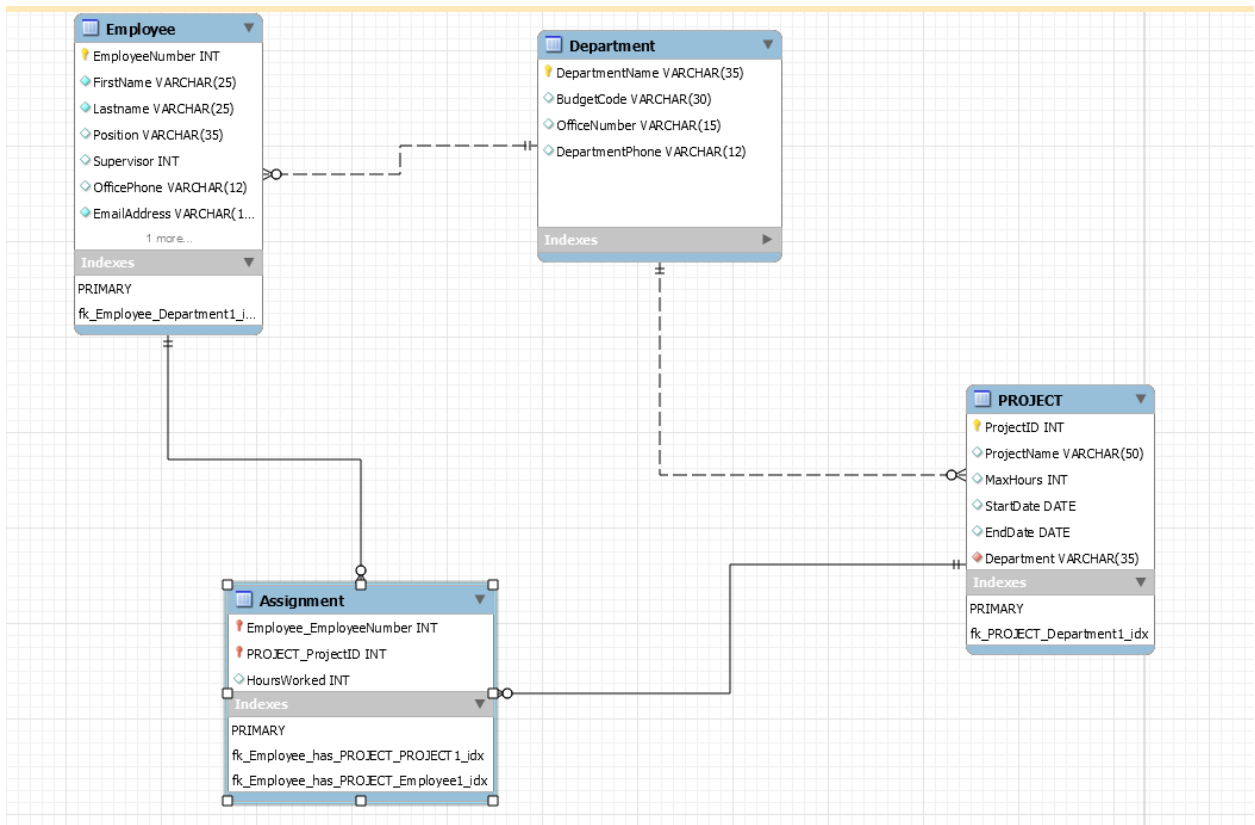
The following parts need to be included in the report document. You can save it as a pdf file as well. The grading is based on the following areas of the report.

1. Cover Page (Title page that indicates your database project title, and each team member names as it appears in d2l)
2. Description of database (milestone #1, with feedback incorporated, if everything was good in milestone 1, you can include it as it was submitted)
3. E.R model description (milestone 2 with feedback incorporated, if everything was good in milestone 2, you can include it as it was submitted))
4. E/R Model Screen Shot (Should be clear from milestone 2 and make changes based on feedback provided)
5. Relational form representation of database tables (Please use correct formatting to show primary keys and foreign keys and mention referential integrity rules)
 - a. At least 3 different tables. (if you are three-person group, please have at least 4 tables)
 - b. Establish appropriate relationships between the tables via foreign keys
 - c. Example of relational form- TEXTBOOK(ISBN, Title, Edition, Year, *PublisherID*, *AuthorID*)
6. Database implementation- Please describe how you implemented your E.R model in MySQL. Please include some screen shots to document the process.
7. Screen shots of the database schema, database tables, attributes, data types and actual data. You need to show this for each table, the attributes, foreign key information and actual data. Included below is a sample screen shot of one table. Please include the screen shot for all tables. If the screen shots are too small and not clear, you will not receive points.
8. Queries- Please include a brief description of every query and how you expect the results of the shown by the query to be helpful to the business. There should be five queries of the following types
 - a. **Query1:** a compound condition (AND, OR)
 - b. **Query2:** one of the built-in functions, SUM, AVG, COUNT, MAX, or MIN in the Design view
 - c. **Query3:** Sub-query
 - d. **Query 4:** Group By Clause
 - e. **Query5:** the join of two or more tables
9. Please include the queries that you have created in SQL. Under every query, please include the screen shot with the results
10. Conclusion and lessons learned
11. Contributions and team work- Each team will include a brief description of how you and your team member communicated and worked on this part virtually and also list the tasks that each

team member completed. It is important for all team members to equally contribute to receive the same grade on the project. If all team members worked equally, you can state that each team member worked equally on the project

All screen shots need to be clear. You can use the snipping tool that comes with Windows for your screen shots.

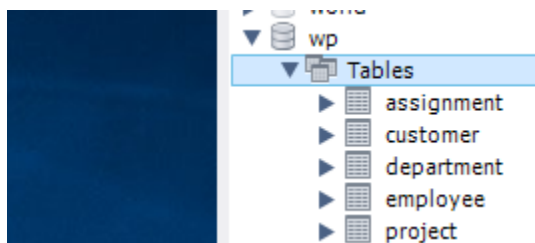
Report component 4: Sample screen shot of database model (The cardinalities, attributes, PKs and FKs should be clearly visible)



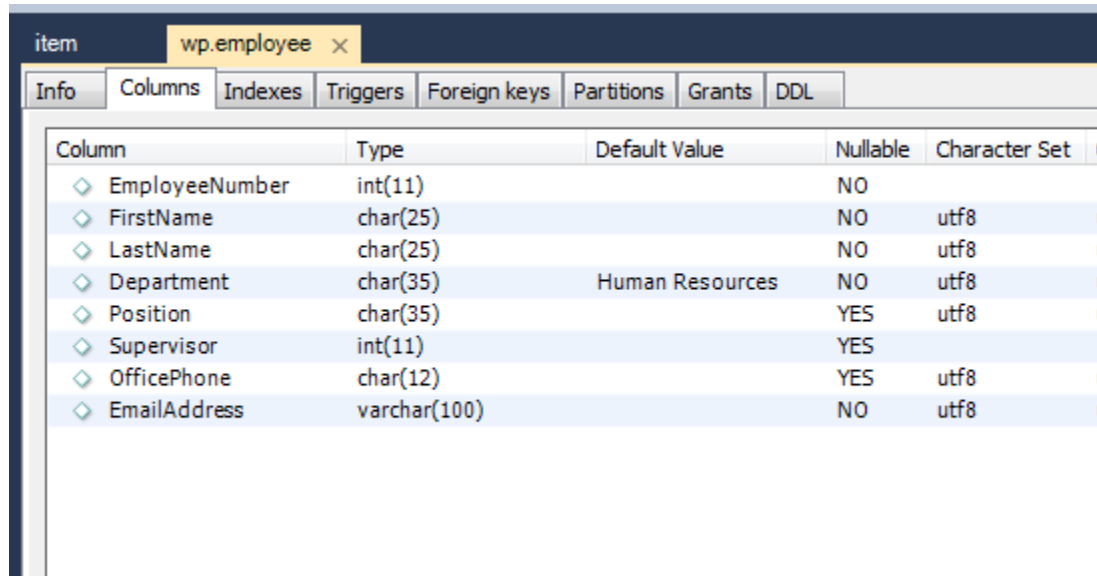
Report Component 7 example on screen shots

Sample Screen shot of one table (Please include this for all tables you have)

A. Sample screen shot of schema

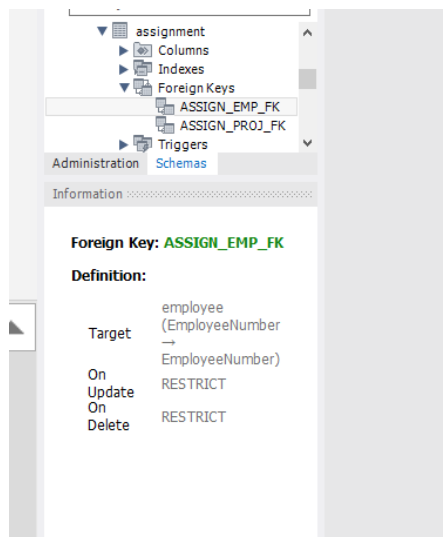


B. Sample screen shot of table and its attributes

A screenshot of a database tool showing the structure of the 'wp.employee' table. The 'Columns' tab is selected, displaying a table with columns: EmployeeNumber, FirstName, LastName, Department, Position, Supervisor, OfficePhone, and EmailAddress. Each column has a diamond icon, a type, a default value, and a nullable status. The 'Character Set' column is also visible.

Column	Type	Default Value	Nullable	Character Set
EmployeeNumber	int(11)		NO	
FirstName	char(25)		NO	utf8
LastName	char(25)		NO	utf8
Department	char(35)	Human Resources	NO	utf8
Position	char(35)		YES	utf8
Supervisor	int(11)		YES	
OfficePhone	char(12)		YES	utf8
EmailAddress	varchar(100)		NO	utf8

C. Sample screen shot of foreign keys identified for table with foreign keys



D. Sample screen shot on actual data in the table

EmployeeNumber	FirstName	LastName	Department	Position	Supervisor	OfficePhone	EmailAddress
1	Marv	Jacobs	Administration	CEO	NULL	360-285-8110	Marv.Jacobs@WP.com
2	Rosalie	Jackson	Administration	Admin Assistant	1	360-285-8120	Rosalie.Jackson@WP.com
3	Richard	Bandalone	Legal	Attorney	1	360-285-8210	Richard.Bandalone@WP.com
4	George	Smith	Human Resources	HR3	1	360-285-8310	George.Smith@WP.com
5	Alan	Adams	Human Resources	HR1	4	360-285-8320	Alan.Adams@WP.com
6	Ken	Evans	Finance	CFO	1	360-285-8410	Ken.Evans@WP.com
7	Marv	Abernathy	Finance	FA3	6	360-285-8420	Marv.Abernathy@WP.com
8	Tom	Caruthers	Accounting	FA2	6	360-285-8430	Tom.Caruthers@WP.com
9	Heather	Jones	Accounting	FA2	6	360-285-8440	Heather.Jones@WP.com
10	Ken	Numoto	Sales and Marketing	SM3	1	360-287-8510	Ken.Numoto@WP.com
11	Linda	Granger	Sales and Marketing	SM2	10	360-287-8520	Linda.Granger@WP.com
12	James	Nestor	InfoSystems	CIO	1	360-287-8610	James.Nestor@WP.com
13	Rick	Brown	InfoSystems	IS2	12	NULL	Rick.Brown@WP.com

Report Component 8 example

Sample screen shot of query description, the actual SQL query and query result

Brief description for each query -> example- This query shows all the employees from the legal department. This will help our business further analyze employee information from a specific department such as legal.

```

1 SELECT *
2 FROM Employee
3 WHERE Department= 'Legal';
4
5

```

EmployeeNumber	FirstName	LastName	Department	Position	Supervisor	OfficePhone	EmailAddress
3	Richard	Bandalone	Legal	Attorney	1	360-285-8210	Richard.Bandalone@WP.com
NULL	NULL	NULL	NULL	NULL	NULL	NULL	NULL

General Rubric

Cover page and contributions page	5 points
Description of your database (milestone 1)	5 points
E.R model, description and relational form (milestone 2)	5 points
Database implementation description	20 points
All required implementation clear screen shots	25 points
Query description (need to provide a brief description of the purpose of the query)	15 points
Clear Screen shot of queries showing SQL code and results	20 points
Conclusion and lessons learned	5 points